

Year1 knowledge organiser

Plants

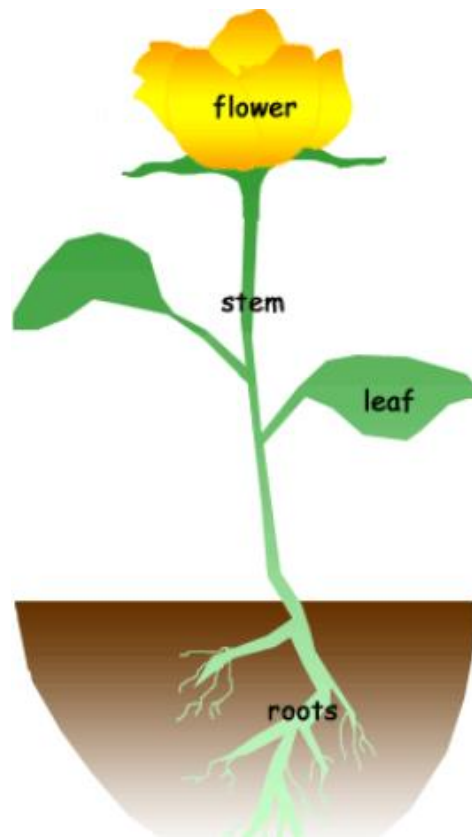
| What? (Key Knowledge) | | Spelling | Definition/Sentence |
|---------------------------|--|-----------|--|
| | | Evergreen | A plant or tree that keeps its leaves all year. |
| A plant | A living thing that usually grows from the ground. | Deciduous | A tree that loses its leaves in Autumn and grows new ones in Spring. |
| The main parts of a plant | flowers leaves stem roots | Seed | The part of a flowering plant that can develop into a new plant. |

| | |
|-----------------------------|--|
| 6 common plants to identify | Tulips Daffodils Roses Poppies Daisies Buttercups |
|-----------------------------|--|

| | |
|--------------------------|--|
| The main parts of a tree | crown leaves twigs branches trunk roots |
|--------------------------|--|

| | |
|------------------------|---------------------------------------|
| 5 common trees to know | Ash Beech Birch Maple Oak |
|------------------------|---------------------------------------|

Parts of a plant



The Structure of a Tree

