

Seasonal Changes

Four seasons every year

winter



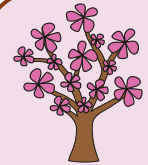
It is cold, rainy and can be snowy.

Deciduous trees have no leaves.

Some animals hibernate.



spring



It is warm but there can be lots of rain. Lots of flowers grow and young animals are born.



autumn



It is cool, rainy and can be windy.

Animals prepare for winter and leaves

turn brown on deciduous trees.



summer



It is hot and dry. Plants grow quickly and we see lots of plants and animals.



Day and Night

The Earth rotates (spins). Daytime is when we are facing the Sun. Nighttime is when we are facing away from the Sun. In the summer, there are more hours of daylight.



night

daytime

Sun

