

2021 KS2 School Dashboard

for governors & school leaders

Produce custom dashboards
at fftaspire.org

Abbey Hey Primary Academy

LA Manchester DFE 3522020 Produced October 2021 Version 1

What it is

Seven easy-to-use reports that help governors and school leaders to evaluate school performance using the latest 2019 school performance indicators.

What it tells you

What are the strengths, areas for improvement and under-performing groups of pupils

How does attainment and pupil progress compare to the national average over the last three years?

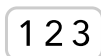
How are you performing in different subjects?

Important for 2021

2021 data has been calculated using the teacher assessment data uploaded by schools who participated in the 2021 FFT Assessment Service. **The data is for internal use only and is NOT intended to be used for external accountability.**

With no test data available, this year's TA analysis should also be treated with additional care, especially when comparing to data from previous years. The 'national' comparator has been generated using the data supplied by participating schools. Please take this into account when analysing your school's data.

About the data shown



Actual results

Actual results for your school, using a range of measures such as averages and thresholds.



Gauges

These display headline indicators and whether actual results and pupils' progress are in line with, or significantly above or below, the national average.



Pupil progress

The value added progress that your pupils have made from one key stage to the next. FFT compares your actual results to the estimated results based on the progress of similar pupils nationally.



Statistical significance

Green plus signs and red minus signs highlight where either actual results or pupils' progress is significantly above or below the national average.



Trends

The dashboard analyses school performance over 3-5 years. Any significant year-on-year improvement is highlighted using an up arrow. Significant declines in performance are highlighted with a down arrow.



Strengths & weaknesses

These highlight key pupil groups and subjects where progress is above or below the national average.

Working in partnership with



Data sources

2021 data has been calculated using the teacher assessment data uploaded by schools who participated in the 2021 FFT Assessment Service.

2021 self-evaluation reports have been calculated using the teacher assessments provided by schools as part of the FFT End of Key Stage Assessment Service. ?

Abbey Hey Primary Academy

2021 KS2

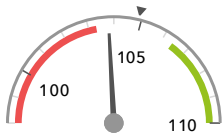
Overview

KS2 Attainment 2021 - Actual results

88 pupils

Average Scaled Score (Re, Ma)

103.8

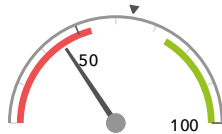


In line with the national average (104.9) ◀

% Expected standard+ (Re, Wr, Ma)

DFE

45% - ↓



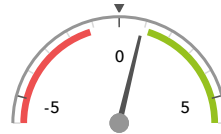
Significantly below the national average (64%) ◀

KS2 Progress 2021 - Value Added

76 matched pupils

Average Scaled Score (Re, Ma)

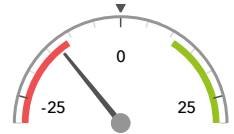
+0.9



In line with the national average (0) ◀

% Expected standard+ (Re, Wr, Ma)

-13% - ↓



Significantly below the national average (0%) ◀

KS2 higher and lower performing pupil groups 2021

Minimum group size: 5

	Higher performing	Lower performing
Overall achievement pupil progress	Black African (17) + Lower attainers (17) Male (41) +	Pakistani (5) - Female (35) ↓ FSM (36) ↓
KS2 reading achievement pupil progress	Black African (17) + Male (41) + Not FSM (40) +	Pakistani (5) - SEN Support (19) Female (35)
KS2 writing achievement pupil progress	Lower attainers (17) ↓ Male (41) ↓ Spring Term (24)	Female (35) - ↓ Pakistani (5) FSM (36) - ↓
KS2 mathematics achievement pupil progress	Black African (17) + Lower attainers (17) + Not FSM (40)	Pakistani (5) - FSM (36) Female (35)

2021 self-evaluation reports have been calculated using the teacher assessments provided by schools as part of the FFT End of Key Stage Assessment Service. ?

Abbey Hey Primary Academy

2021 KS2

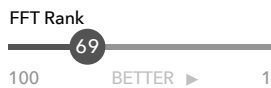
Attainment & progress

KS2 Attainment 2021

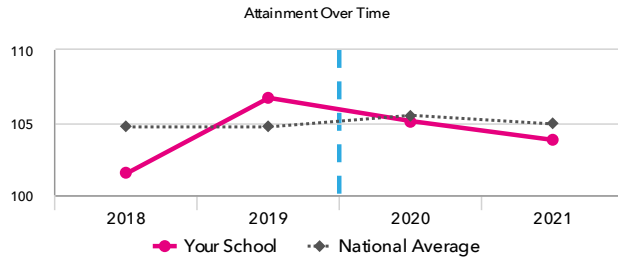
88 pupils

Average Scaled Score (Re, Ma)

103.8



In line with the national average (104.9)

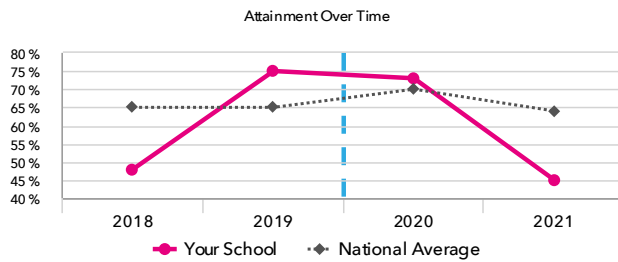


% Expected standard+ (Re, Wr, Ma) DfE

45% - ↓



Significantly below the national average (64%)



KS2 Progress 2021

76 matched pupils

Average Scaled Score (Re, Ma)

+0.9



In line with the national average (0)

% Expected standard+ (Re, Wr, Ma)

-13% - ↓



Significantly below the national average (0%)

KS2 performance summary

	Actual results			Pupil progress		
	2019	2020	2021	2019	2020	2021
Number of Pupils / % Matched	87	92	88	89%	80%	86%
% Expected standard+ (Re, Wr, Ma)	75% ↑	73%	45% - ↓	+26% + ↑	+10% ↓	-13% - ↓
% Higher standard (Re, Wr, Ma)	10%	14%	1% -	+7% +	+4%	-6% -
Average Scaled Score (Re, GPS, Ma)	106.9 + ↑	105.2	103.5	+6.2 + ↑	+2.1 + ↓	+0.5
Average Scaled Score (Re, Ma)	106.7 + ↑	105.1	103.8	+6.5 + ↑	+2.4 + ↓	+0.9
% Expected standard+ Reading	82% ↑	80%	73%	+23% + ↑	+8%	+0%
% Higher standard Reading	47% + ↑	37%	45% +	+31% + ↑	+13% + ↓	+20% +
Scaled Score Reading	106.8 + ↑	105.5	104.4	+7.1 + ↑	+3.1 + ↓	+1.3
% Expected standard+ Writing	75%	77%	52% - ↓	+11%	+10% +	-13% - ↓
% Higher standard Writing	17%	16%	1% - ↓	+8% +	+2%	-11% -
Scaled Score Writing	100.6	105.4 ↑	100.8 - ↓	+2.6 +	+2.5 +	-1.6 - ↓
% Expected standard+ Maths	85% ↑	78%	70%	+20% + ↑	+5%	+1%
% Higher standard Maths	41% + ↑	25% ↓	23%	+26% + ↑	+2% ↓	+5%
Scaled Score Maths	106.6 ↑	104.7	103.2	+5.9 + ↑	+1.7 + ↓	+0.4
% Expected standard+ Grammar, Punctuation & Spelling	80%	80%	72%	+15% +	+10% +	+2%
% Higher standard Grammar, Punctuation & Spelling	52% + ↑	24% ↓	9% - ↓	+28% + ↑	-2% ↓	-11% -
Scaled Score Grammar, Punctuation & Spelling	107.4	106.1	103.4 - ↓	+5.7 + ↑	+1.8 + ↓	-0.3 ↓
% Expected standard+ Science	77%	-	-	-	-	-

2021 self-evaluation reports have been calculated using the teacher assessments provided by schools as part of the FFT End of Key Stage Assessment Service. ?

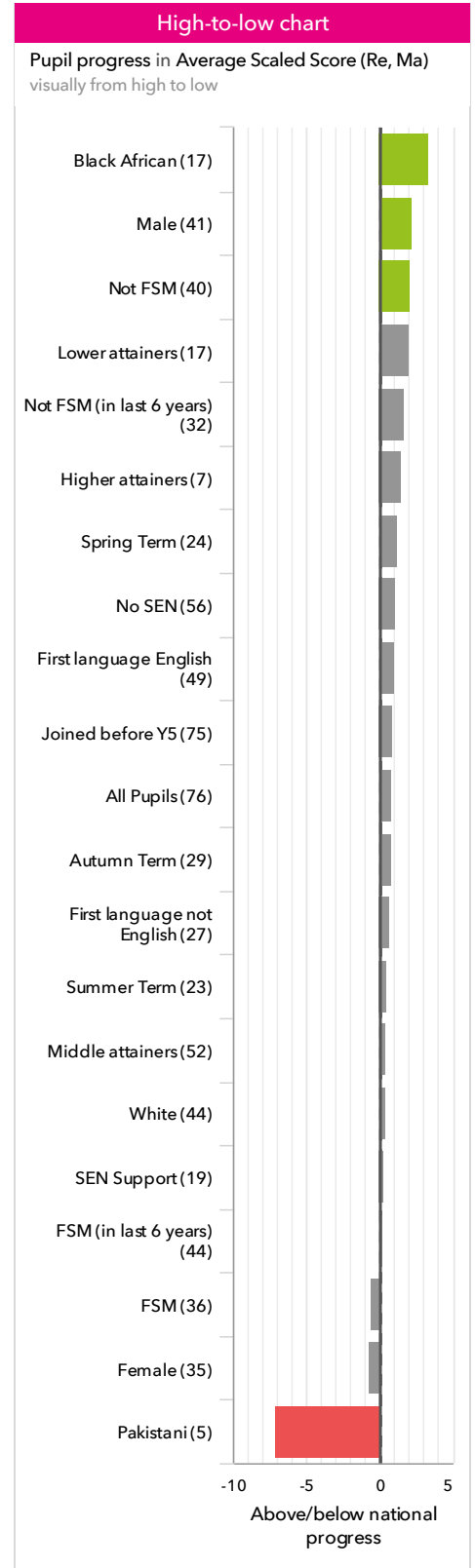
Abbey Hey Primary Academy

2021 KS2

Pupil groups

KS2 Pupil groups performance 2021

	Pupils	Actual results			Pupil progress			
		Average Scaled Score (Re, Ma)	% Expected standard+ (Re, Wr, Ma) <small>DFE</small>	% Higher standard (Re, Wr, Ma) <small>DFE</small>	Average Scaled Score (Re, Ma)	% Expected standard+ (Re, Wr, Ma)	% Higher standard (Re, Wr, Ma)	
Summary	All Pupils	88	103.8	45% ⬇️	1% ⬇️	+0.9	-13% ⬇️	-6% ⬇️
Gender	Male	48	104.7	54%	2%	+2.2 ⬆️	-1%	-6%
	Female	40	102.7 ⬇️	35% ⬇️	0% ⬇️	-0.7	-28% ⬇️	-6%
FFT Prior Attainment	Higher attainers	7	113.0	100%	14%	+1.5	+4%	-23%
	Middle attainers	52	106.5 ⬇️	56% ⬇️	0%	+0.4	-21% ⬇️	-6%
	Lower attainers	17	95.1	12%	0%	+2.0	+3%	-0%
Pupil Premium	FSM (in last 6 years)	53	101.9	36% ⬇️	0%	+0.2	-19% ⬇️	-7%
	Not FSM (in last 6 years)	35	106.6	60% ⬇️	3%	+1.7	-6%	-5%
FSM	FSM	45	100.6	31% ⬇️	0%	-0.6 ⬇️	-21% ⬇️	-6%
	Not FSM	43	107.1	60%	2% ⬇️	+2.1 ⬆️	-6%	-7%
Term of Birth	Autumn Term	35	104.3	43% ⬇️	0% ⬇️	+0.8	-18% ⬇️	-8%
	Spring Term	28	103.6	54%	4%	+1.2	-5%	-6%
	Summer Term	25	103.2	40% ⬇️	0%	+0.5	-16%	-4%
SEN Group	SEN Support	20	97.7	20%	0%	+0.3	-13%	-4%
	EHC Plan	1	84.5	0%	0%	-1.8	-0%	-0%
	No SEN	67	105.9	54% ⬇️	1% ⬇️	+1.1	-14% ⬇️	-7%
EAL	First language not English	36	102.1	39% ⬇️	0% ⬇️	+0.7	-8%	-5%
	First language English	52	105.0	50% ⬇️	2% ⬇️	+1.0	-16% ⬇️	-7%
Mobility	Joined in Y5 or Y6	6	100.8	0%	0%	-0.8	-72%	-4%
	Joined before Y5	82	104.0	49% ⬇️	1% ⬇️	+0.9	-13% ⬇️	-6% ⬇️
Ethnicity	White	46	103.8	50% ⬇️	0% ⬇️	+0.4	-14% ⬇️	-9% ⬇️
	Black Caribbean	3	109.5	67%	33%	+1.4	-17%	+13%
	Black African	22	102.8	32% ⬇️	0%	+3.4 ⬆️	-13%	-3%
	Indian	3	108.0	33%	0%	+1.8	-32%	-11%
	Pakistani	5	96.9	40%	0%	-7.1 ⬇️	-23%	-4%
	Other Asian	1	100.0	0%	0%	+2.5	-22%	-0%
	Any Other	7	107.3	71%	0%	+3.7	+24%	-5%
	Unknown	1	110.0	0%	0%	-	-	-



2021 self-evaluation reports have been calculated using the teacher assessments provided by schools as part of the FFT End of Key Stage Assessment Service. ?

Abbey Hey Primary Academy

2021 KS2

Subjects

KS2 subject performance 2021

	Actual results			Pupil progress			Actual results over time		
	2019	2020	2021	2019	2020	2021			
Number of Pupils / % Matched	87	92	88	89%	80%	86%			
Reading									
% Expected standard+	82% ↑	80%	73%	+23% ↑	+8%	+0%			
% Higher standard	47% ↑	37%	45% ↑	+31% ↑	+13% ↓	+20% ↑			
Scaled Score	107 ↑	105	104	+7.1 ↑	+3.1 ↓	+1.3			
Writing									
% Expected standard+	75%	77%	52% ↓	+11%	+10% ↑	-13% ↓			
% Higher standard	17%	16%	1% ↓	+8% ↑	+2%	-11% ↓			
Scaled Score	101	105 ↑	101 ↓	+2.6 ↑	+2.5 ↑	-1.6 ↓			
Maths									
% Expected standard+	85% ↑	78%	70%	+20% ↑	+5%	+1%			
% Higher standard	41% ↑	25% ↓	23%	+26% ↑	+2% ↓	+5%			
Scaled Score	107 ↑	105	103	+5.9 ↑	+1.7 ↓	+0.4			
Grammar, Punctuation & Spelling									
% Expected standard+	80%	80%	72%	+15% ↑	+10% ↑	+2%			
% Higher standard	52% ↑	24% ↓	9% ↓	+28% ↑	-2% ↓	-11% ↓			
Scaled Score	107	106	103 ↓	+5.7 ↑	+1.8 ↓	-0.3 ↓			
Science									
% Expected standard+	77%	-	-	-	-	-			

2021 self-evaluation reports have been calculated using the teacher assessments provided by schools as part of the FFT End of Key Stage Assessment Service. ?

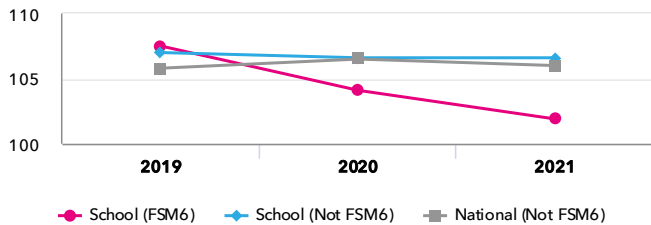
Abbey Hey Primary Academy

2021 KS2

Disadvantaged pupils

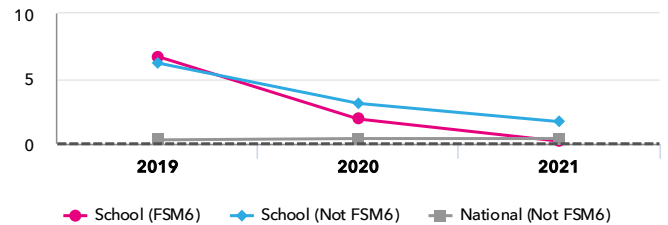
KS2 attainment for disadvantaged pupils 2021

Average Scaled Score (Re, Ma)

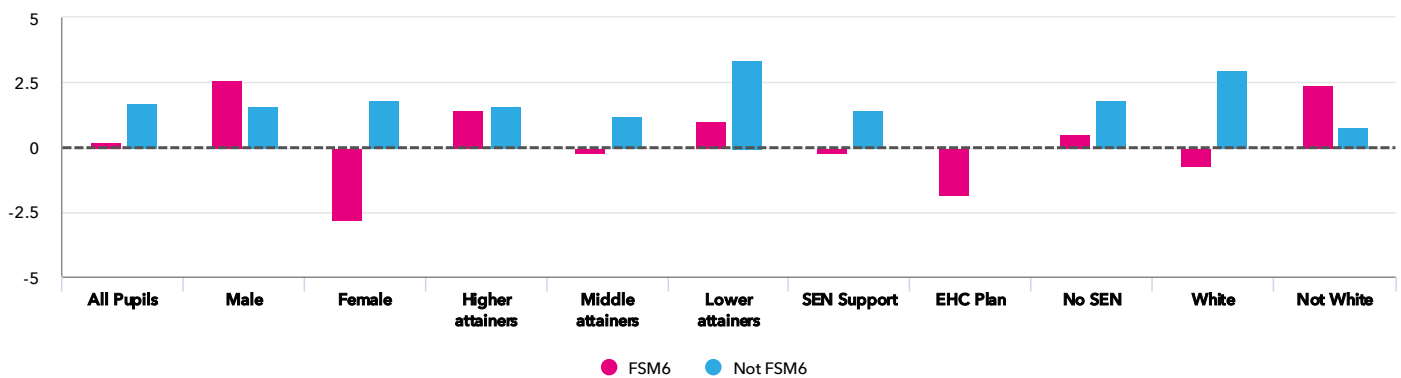


KS2 progress for disadvantaged pupils 2021

Average Scaled Score (Re, Ma)



Progress gap Average Scaled Score (Re, Ma)



Attainment & progress

Pupils	Attainment			Progress					
	Average Scaled Score (Re, Ma)			Average Scaled Score (Re, Ma)					
	FSM6	Not FSM6	Gap	FSM6	Not FSM6	Gap			
Summary	All Pupils	53	35	101.9	106.6	-4.7	0.2	1.7	-1.5
Gender	Male	29	19	103.5	106.6	-3.1	2.6	1.6	1
	Female	24	16	100	106.7	-6.7	-2.8	1.8	-4.6
FFT Prior Attainment	Higher attainers	4	3	112.6	113.5	-0.9	1.4	1.6	-0.2
	Middle attainers	30	22	105.9	107.3	-1.4	-0.2	1.2	-1.4
	Lower attainers	10	7	91.9	99.7	-7.8	1	3.4	-2.4
SEN Group	SEN Support	14	6	96.5	100.3	-3.8	-0.2	1.4	-1.6
	EHC Plan	1	-	84.5	-	-	-1.8	-	-
	No SEN	38	29	104.3	108	-3.7	0.5	1.8	-1.3
Ethnic Group	White	33	13	101.6	109.4	-7.8	-0.7	3	-3.7
	Not White	20	22	102.4	105	-2.6	2.4	0.8	1.6

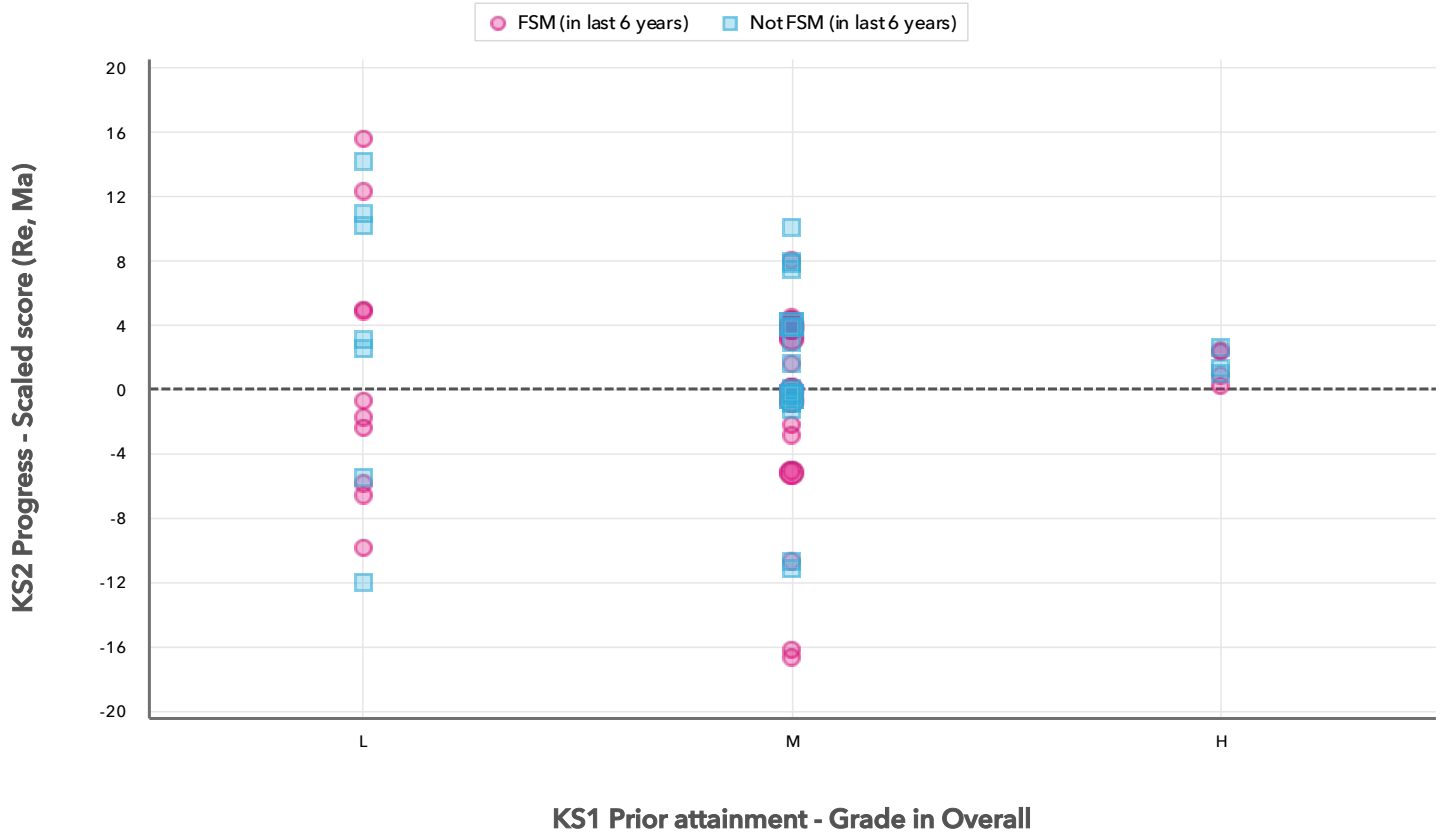
2021 self-evaluation reports have been calculated using the teacher assessments provided by schools as part of the FFT End of Key Stage Assessment Service. ?

Abbey Hey Primary Academy

2021 KS2

Scatterplot

KS2 Pupil scatterplot 2021 88 pupils highlighted by Pupil Premium



Context data has been produced using the data supplied by schools as part of the FFT 2021 End of Key Stage Results Service. ?

Abbey Hey Primary Academy

2021

KS2

Context

Context · Year 6

		Pupils		Comparative profile 2020 / 2021		Absence during Key Stage 2		Persistent absence during Key Stage 2	
		School	School	National	School	National	School	National	
Summary	All Pupils	88	100%	100%	-	-	-	-	
Gender	Male	48	55%	51%	-	-	-	-	
	Female	40	45%	49%	-	-	-	-	
FFT Prior Attainment	Higher attainers	7	8%	18%	-	-	-	-	
	Middle attainers	52	59%	60%	-	-	-	-	
	Lower attainers	17	19%	17%	-	-	-	-	
Pupil Premium	FSM (in last 6 years)	53	60%	28%	-	-	-	-	
	Not FSM (in last 6 years)	35	40%	71%	-	-	-	-	
FSM	FSM	45	51%	24%	-	-	-	-	
	Not FSM	43	49%	76%	-	-	-	-	
Term of Birth	Autumn Term	35	40%	34%	-	-	-	-	
	Spring Term	28	32%	33%	-	-	-	-	
	Summer Term	25	28%	34%	-	-	-	-	
SEN Group	SEN Support	20	23%	15%	-	-	-	-	
	EHC Plan	1	1%	3%	-	-	-	-	
	No SEN	67	76%	82%	-	-	-	-	
EAL	First language not English	36	41%	25%	-	-	-	-	
	First language English	52	59%	75%	-	-	-	-	
Mobility	Joined in Y5 or Y6	6	7%	6%	-	-	-	-	
	Joined before Y5	82	93%	94%	-	-	-	-	
Ethnicity	White	46	52%	70%	-	-	-	-	
	Black Caribbean	3	3%	3%	-	-	-	-	
	Black African	22	25%	6%	-	-	-	-	
	Indian	3	3%	4%	-	-	-	-	
	Pakistani	5	6%	5%	-	-	-	-	
	Other Asian	1	1%	4%	-	-	-	-	
	Any Other	7	8%	5%	-	-	-	-	
	Unknown	1	1%	1%	-	-	-	-	