

2023 KS2 School Dashboard

for governors & school leaders

Produce custom dashboards
at fftaspire.org

Abbey Hey Primary Academy

LA Manchester DFE 3522020 Produced October 2023 Version 1

What it is

Seven easy-to-use reports that help governors and school leaders to evaluate school performance using the latest 2023 school performance indicators.

What it tells you

What are the strengths, areas for improvement and under-performing groups of pupils

How does attainment and pupil progress compare to the national average this academic year?

How are you performing in different subjects?

How might the context of your school affect performance?

About the data shown

1 2 3

Actual results

Actual results for your school, using a range of measures such as averages and thresholds.



Gauges

These display headline indicators and whether actual results and pupils' progress are in line with, or significantly above or below, the national average.

ESTIMATED

1 2 3

Pupil progress

The value added progress that your pupils have made from one key stage to the next. FFT compares your actual results to the estimated results based on the progress of similar pupils nationally.



Statistical significance

Green plus signs and red minus signs highlight where either actual results or pupils' progress is significantly above or below the national average.



Trends

The dashboard analyses school performance over 3-5 years. Any significant year-on-year improvement is highlighted using an up arrow. Significant declines in performance are highlighted with a down arrow.



Strengths & weaknesses

These highlight key pupil groups and subjects where progress is above or below the national average.

Working in partnership with



Data sources

Generated from FFT Aspire which includes data sourced from the DfE (National Pupil Database) and data calculated by FFT. FFT is accredited as a DfE supplier to receive early access to ASP data. Headline performance indicators will be consistent with the DfE School Performance Tables and ASP.

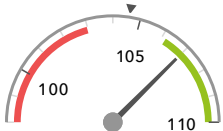
Overview

KS2 Attainment 2023 · Actual results

88 pupils

Average Scaled Score (Re, Ma)

107.0+

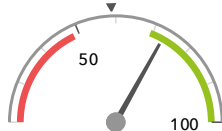


Significantly above the national average (104.6) ◀

% Expected standard+ (Re, Wr, Ma)

DFE

73%+



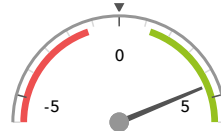
Significantly above the national average (59%) ◀

KS2 Progress 2023 · Value Added

77 matched pupils

Average Scaled Score (Re, Ma)

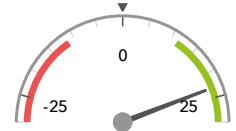
+4.5+



Significantly above the national average (0) ◀

% Expected standard+ (Re, Wr, Ma)

+23%+



Significantly above the national average (0%) ◀

KS2 higher and lower performing pupil groups 2023

Minimum group size: 5

	Higher performing	Lower performing
Overall achievement pupil progress	SEN Support (16)+ First language not English (35)+ Black African (16)+	
KS2 reading achievement pupil progress	SEN Support (16)+ First language not English (35)+ Lower attainers (26)+	
KS2 writing achievement pupil progress	SEN Support (16)+ ↑ Black African (16)+ Female (36)+	Higher attainers (14)
KS2 mathematics achievement pupil progress	First language not English (35)+ Black African (16)+ Any Other (7)+	

Census information

KS2's latest academic year uses the Spring 2023 DfE census – [learn more](#) · [See recent Aspire updates](#)

Attainment & progress

KS2 Attainment 2023

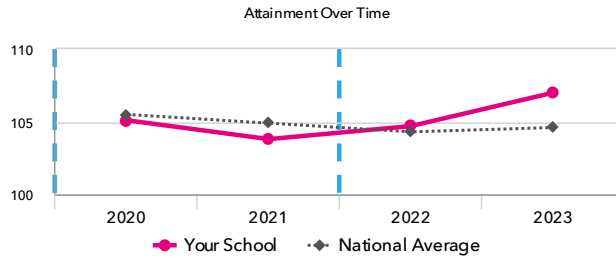
88 pupils

Average Scaled Score (Re, Ma)

107.0+



Significantly above the national average (104.6)

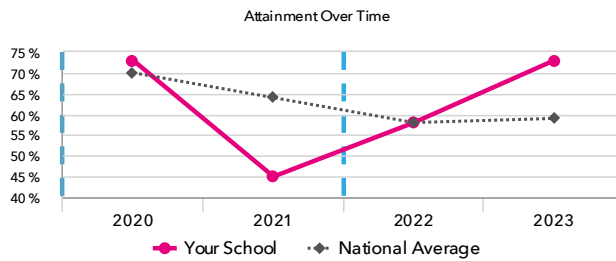


% Expected standard+ (Re, Wr, Ma) DFE

73%+



Significantly above the national average (59%)



KS2 Progress 2023

77 matched pupils

Average Scaled Score (Re, Ma)

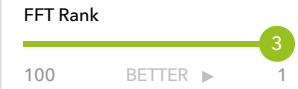
+4.5+



Significantly above the national average (0)

% Expected standard+ (Re, Wr, Ma)

+23%+



Significantly above the national average (0%)

KS2 performance summary

	Actual results			Pupil progress		
	2021	2022	2023	2021	2022	2023
Number of Pupils / % Matched	88	89	88	86%	88%	88%
% Expected standard+ (Re, Wr, Ma)	45% ⬇️	58%	73% ⬆️	-13% ⬇️	+11% ⬆️	+23% ⬆️
% Higher standard (Re, Wr, Ma)	1% ⬇️	0% ⬇️	6%	-6% ⬇️	-3%	+0%
Average Scaled Score (Re, GPS, Ma)	103.5	104.2	107.1 ⬆️	+0.5	+3.9 ⬆️	+4.7 ⬆️
Average Scaled Score (Re, Ma)	103.8	104.7	107.0 ⬆️	+0.9	+4.4 ⬆️	+4.5 ⬆️
% Expected standard+ Reading	73%	73%	78%	+0%	+10%	+16% ⬆️
% Higher standard Reading	45% ⬆️	29%	34%	+20% ⬆️	+10% ⬆️	+11% ⬆️
Scaled Score Reading	104.4	104.9	106.6	+1.3	+4.2 ⬆️	+3.7 ⬆️
% Expected standard+ Writing	52% ⬇️	69%	78%	-13% ⬇️	+12% ⬆️	+16% ⬆️
% Higher standard Writing	1% ⬇️	0% ⬇️	8%	-11% ⬇️	-6% ⬇️	-1%
Scaled Score Writing	100.8 ⬇️	96.2 ⬇️	99.2	-1.6 ⬇️	+0.6	+1.9 ⬆️
% Expected standard+ Maths	70%	79%	82%	+1%	+16% ⬆️	+18% ⬆️
% Higher standard Maths	23%	29%	48% ⬆️	+5%	+15% ⬆️	+28% ⬆️
Scaled Score Maths	103.2	104.5	107.4 ⬆️	+0.4	+4.7 ⬆️	+5.3 ⬆️
% Expected standard+ Grammar, Punctuation & Spelling	72%	69%	77%	+2%	+7%	+15% ⬆️
% Higher standard Grammar, Punctuation & Spelling	9% ⬇️	19%	43% ⬆️	-11% ⬇️	+0%	+20% ⬆️
Scaled Score Grammar, Punctuation & Spelling	103.4 ⬇️	103.0 ⬇️	106.8 ⬆️	-0.3 ⬇️	+1.8 ⬆️	+4.4 ⬆️
% Expected standard+ Science	-	81%	84%	-	-	-

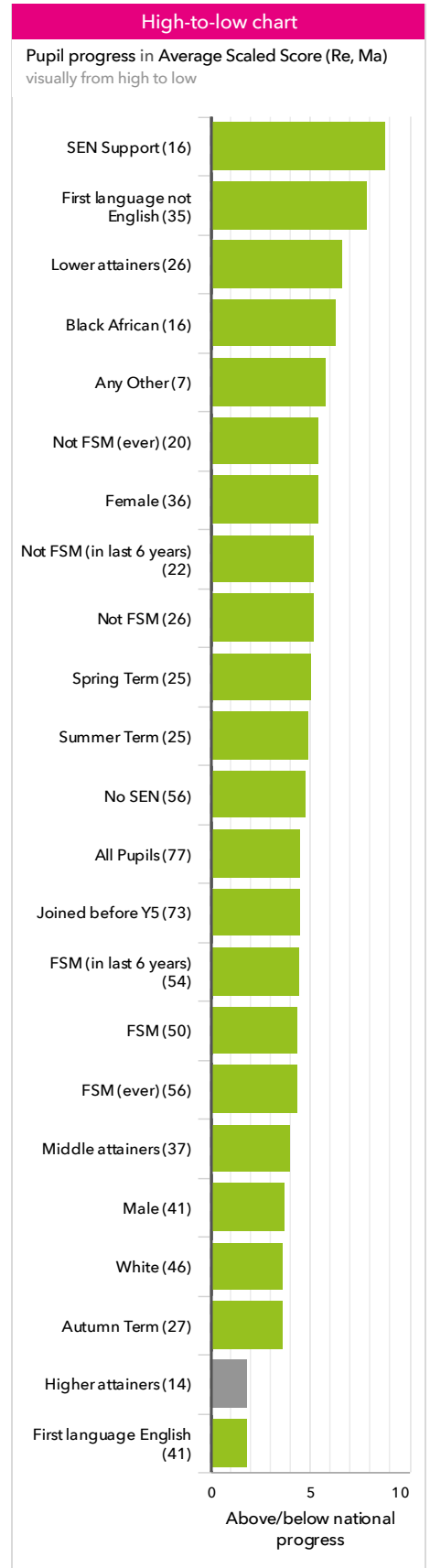
Census information

KS2's latest academic year uses the Spring 2023 DfE census – [learn more](#) · [See recent Aspire updates](#)

Pupil groups

KS2 Pupil groups performance 2023

	Pupils	Actual results			Pupil progress			
		Average Scaled Score (Re, Ma)	% Expected standard+ (Re, Wr, Ma) <small>DFE</small>	% Higher standard (Re, Wr, Ma) <small>DFE</small>	Average Scaled Score (Re, Ma)	% Expected standard+ (Re, Wr, Ma)	% Higher standard (Re, Wr, Ma)	
Summary	All Pupils	88	107.0 +	73% +	6%	+4.5 +	+23% +	+0%
Gender	Male	45	106.6	64%	2%	+3.8 +	+18% +	-1%
	Female	43	107.4 +	81% +	9%	+5.4 +	+28% +	+2%
DFE Prior Attainment	Higher attainers	14	113.1	93%	29%	+1.9	-1%	+0%
	Middle attainers	37	108.7 +	92% +	3%	+4.0 +	+25% +	+1%
	Lower attainers	26	100.8 +	38% +	0%	+6.7 +	+31% +	-0%
Pupil Premium	FSM (in last 6 years)	60	107.6 + ↑	72% + ↑	5%	+4.4 +	+20% +	-0%
	Not FSM (in last 6 years)	26	106.6	81%	8%	+5.2 +	+30% +	+2%
FSM	FSM	55	107.6 + ↑	71% +	5%	+4.4 +	+18% +	-0%
	Not FSM	31	106.8	81%	6%	+5.2 +	+33% +	+1%
FSM Ever	FSM (ever)	62	107.2 + ↑	71% + ↑	5%	+4.4 +	+21% +	-0%
	Not FSM (ever)	24	107.6	83%	8%	+5.5 +	+29% +	+3%
Term of Birth	Autumn Term	29	107.7	72%	10%	+3.6 +	+16%	+2%
	Spring Term	29	108.5 +	79% +	3%	+5.0 +	+27% +	+1%
	Summer Term	30	105.1	67%	3%	+4.9 +	+25% +	-2%
SEN Group	SEN Support	16	100.3	44%	6%	+8.8 +	+26% +	+4%
	EHC Plan	4	-	0%	0%	-	-1%	-0%
	No SEN	66	109.0 + ↑	86% +	6%	+4.8 +	+24% +	-0%
EAL	First language not English	44	106.7	73%	2%	+7.8 +	+28% +	-0%
	First language English	42	108.0 + ↑	76% + ↑	10%	+1.9 +	+19% +	+1%
Mobility	Joined in Y5 or Y6	12	102.7	50%	0%	+4.9	+33%	-0%
	Joined before Y5	76	107.7 + ↑	76% + ↑	7%	+4.5 +	+22% +	+0%
Ethnicity	White	46	106.8 +	72%	7%	+3.7 +	+25% +	-0%
	Black Caribbean	1	111.5	100%	0%	+0.4	+5%	-19%
	Black African	19	107.5	79%	5%	+6.3 +	+19%	+1%
	Indian	2	109.0	100%	0%	+5.0	+67%	-0%
	Pakistani	6	107.7	83%	0%	+8.2	+45%	-2%
	Other Asian	1	113.5	100%	0%	+4.8	+9%	-14%
	Any Other	11	107.6	64%	9%	+5.8 +	+7%	+7%
	No Ethnicity Data	2	95.3	0%	0%	-5.3	-21%	-0%



Census information

KS2's latest academic year uses the Spring 2023 DfE census – [learn more](#) · [See recent Aspire updates](#)

Subjects

KS2 subject performance 2023

	Actual results			Pupil progress			Actual results over time		
	2021	2022	2023	2021	2022	2023	2021	2022	2023
Number of Pupils / % Matched	88	89	88	86%	88%	88%			
Reading									
% Expected standard+	73%	73%	78%	+0%	+10%	+16% +			
% Higher standard	45% +	29%	34%	+20% +	+10% +	+11% +			
Scaled Score	104	105	107	+1.3	+4.2 +	+3.7 +			
Writing									
% Expected standard+	52% - ↓	69%	78%	-13% - ↓	+12% +	+16% +			
% Higher standard	1% - ↓	0% -	8%	-11% -	-6% -	-1% -			
Scaled Score	101 - ↓	96 -	99	-1.6 - ↓	+0.6	+1.9 +			
Maths									
% Expected standard+	70%	79%	82%	+1%	+16% +	+18% +			
% Higher standard	23%	29%	48% + ↑	+5%	+15% +	+28% +			
Scaled Score	103	105	107 + ↑	+0.4	+4.7 +	+5.3 +			
Grammar, Punctuation & Spelling									
% Expected standard+	72%	69%	77%	+2%	+7%	+15% +			
% Higher standard	9% - ↓	19%	43% + ↑	-11% -	+0%	+20% + ↑			
Scaled Score	103 - ↓	103 -	107 + ↑	-0.3 - ↓	+1.8 +	+4.4 + ↑			
Science									
% Expected standard+	-	81%	84%	-	-	-			

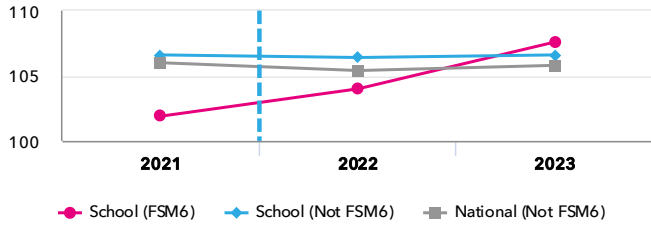
Census information

KS2's latest academic year uses the Spring 2023 DfE census – [learn more](#) · [See recent Aspire updates](#)

Disadvantaged pupils

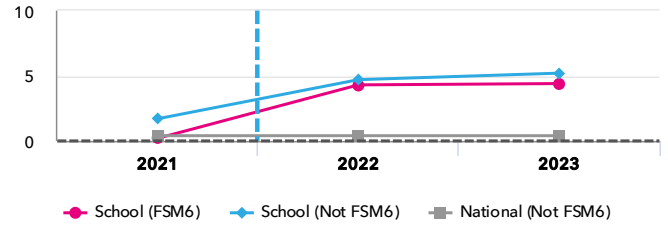
KS2 attainment for disadvantaged pupils 2023

Average Scaled Score (Re, Ma)

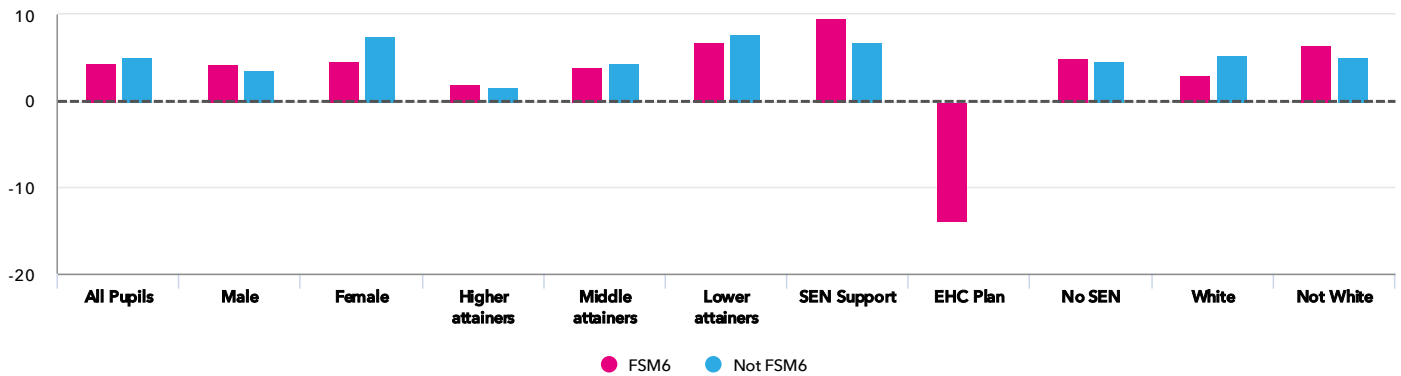


KS2 progress for disadvantaged pupils 2023

Average Scaled Score (Re, Ma)



Progress gap Average Scaled Score (Re, Ma)



Attainment & progress

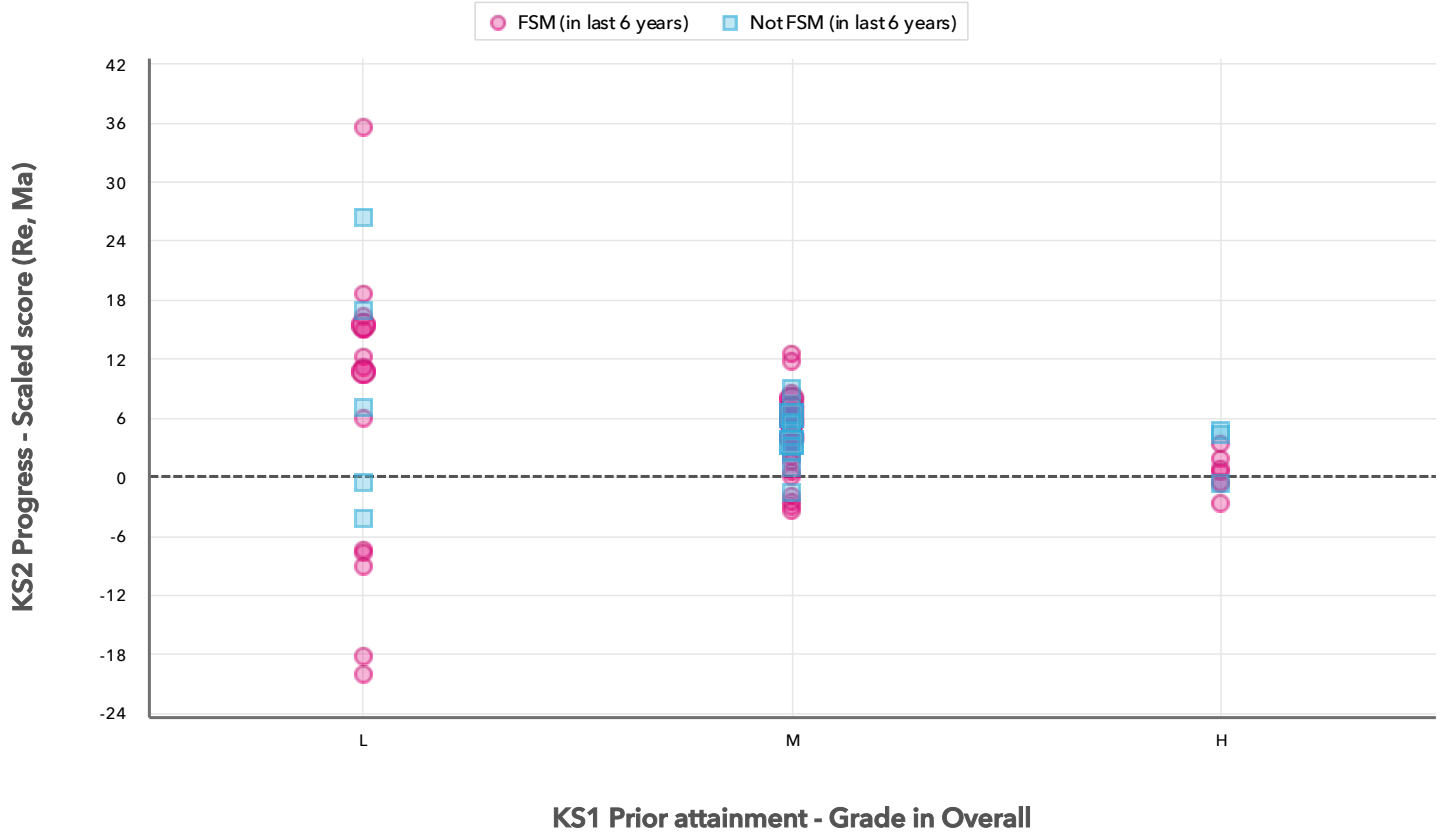
Pupils	Attainment			Progress					
	FSM6	Not FSM6	Average Scaled Score (Re, Ma)			FSM6	Not FSM6	Gap	
			FSM6	Not FSM6	Gap				
Summary	All Pupils	60	26	107.6 ⬆️	106.6	1	4.4 ⬆️	5.2 ⬆️	-0.8
Gender	Male	31	13	107.6	105.4	2.2	4.2	3.5	0.7
	Female	29	13	107.6	107.9	-0.3	4.7	7.5	-2.8
DFE Prior Attainment	Higher attainers	10	4	113	113.4	-0.4	2	1.7	0.3
	Middle attainers	27	10	108.6	109.3	-0.7	3.9	4.5	-0.6
	Lower attainers	17	8	102.3	99.1	3.2	6.8	7.8	-1
SEN Group	SEN Support	11	5	102.1	96.2	5.9	9.6	6.9	2.7
	EHC Plan	4	-	-	-	-	-13.8	-	-
	No SEN	45	21	109	109.2	-0.2	4.9	4.7	0.2
Ethnic Group	White	32	14	107.5	105.2	2.3	3	5.3	-2.3
	Not White	28	12	107.7	108.2	-0.5	6.6	5.1	1.5

Census information

KS2's latest academic year uses the Spring 2023 DfE census – [learn more](#) · [See recent Aspire updates](#)

Scatterplot

KS2 Pupil scatterplot 2023 88 pupils highlighted by Pupil Premium



Census information

KS2's latest academic year uses the Spring 2023 DfE census – [learn more](#) · [See recent Aspire updates](#)

Context

Context · Year 6

		Pupils		Comparative profile 2022 / 2023		Absence during Key Stage 2		Persistent absence during Key Stage 2	
		School	School	National	School	National	School	National	
Summary	All Pupils	89	100%	100%	-	-	-	-	
Gender	Male	46	52%	51%	-	-	-	-	
	Female	43	48%	49%	-	-	-	-	
DFE Prior Attainment	Higher attainers	14	16%	29%	-	-	-	-	
	Middle attainers	37	42%	45%	-	-	-	-	
	Lower attainers	26	29%	21%	-	-	-	-	
Pupil Premium	FSM (in last 6 years)	61	69%	30%	-	-	-	-	
	Not FSM (in last 6 years)	26	29%	70%	-	-	-	-	
FSM	FSM	56	63%	27%	-	-	-	-	
	Not FSM	31	35%	72%	-	-	-	-	
FSM Ever	FSM (ever)	63	71%	30%	-	-	-	-	
	Not FSM (ever)	24	27%	69%	-	-	-	-	
Term of Birth	Autumn Term	30	34%	34%	-	-	-	-	
	Spring Term	29	33%	33%	-	-	-	-	
	Summer Term	30	34%	34%	-	-	-	-	
SEN Group	SEN Support	16	18%	16%	-	-	-	-	
	EHC Plan	4	4%	5%	-	-	-	-	
	No SEN	67	75%	79%	-	-	-	-	
EAL	First language not English	44	49%	22%	-	-	-	-	
	First language English	43	48%	77%	-	-	-	-	
Mobility	Joined in Y5 or Y6	13	15%	8%	-	-	-	-	
	Joined before Y5	76	85%	92%	-	-	-	-	
Ethnicity	White	47	53%	71%	-	-	-	-	
	Black Caribbean	1	1%	3%	-	-	-	-	
	Black African	19	21%	6%	-	-	-	-	
	Indian	2	2%	4%	-	-	-	-	
	Pakistani	6	7%	4%	-	-	-	-	
	Other Asian	1	1%	4%	-	-	-	-	
	Any Other	11	12%	5%	-	-	-	-	
	No Ethnicity Data	2	2%	1%	-	-	-	-	

Census information

KS2's latest academic year uses the Spring 2023 DfE census – [learn more](#) · [See recent Aspire updates](#)