

2023 KS1 School Dashboard

for governors & school leaders

Produce custom dashboards
at fftaspire.org

Abbey Hey Primary Academy

LA Manchester DFE 3522020 Produced November 2023 Version 1

What it is

Seven easy-to-use reports that help governors and school leaders to evaluate school performance using the latest 2023 school performance indicators.

What it tells you

What are the strengths, areas for improvement and under-performing groups of pupils

How does attainment and pupil progress compare to the national average this academic year?

How are you performing in different subjects?

How might the context of your school affect performance?

About the data shown

1 2 3

Actual results

Actual results for your school, using a range of measures such as averages and thresholds.



Gauges

These display headline indicators and whether actual results and pupils' progress are in line with, or significantly above or below, the national average.

ESTIMATED

1 2 3

Pupil progress

The value added progress that your pupils have made from one key stage to the next. FFT compares your actual results to the estimated results based on the progress of similar pupils nationally.



Statistical significance

Green plus signs and red minus signs highlight where either actual results or pupils' progress is significantly above or below the national average.



Trends

The dashboard analyses school performance over 3-5 years. Any significant year-on-year improvement is highlighted using an up arrow. Significant declines in performance are highlighted with a down arrow.



Strengths & weaknesses

These highlight key pupil groups and subjects where progress is above or below the national average.

Working in partnership with



Data sources

Generated from FFT Aspire which includes data sourced from the DfE (National Pupil Database) and data calculated by FFT. FFT is accredited as a DfE supplier to receive early access to ASP data. Headline performance indicators will be consistent with the DfE School Performance Tables and ASP.

2023 Value Added has only been calculated for pupils who we received EYFSP data as part of the 2021 FFT Results Service

Abbey Hey Primary Academy

2023 KS1 VA

Overview

KS1 Attainment 2023 · Actual results

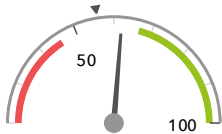
87 pupils

% Expected Standard + (Re, Wr, Ma)

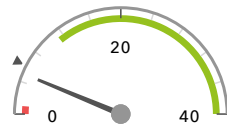
% Higher Standard (Re, Wr, Ma)

62%

5%



In line with the national average (56%) ◀



In line with the national average (6%) ◀

KS1 Progress 2023 · Value Added

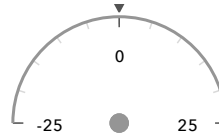
matched pupils

% Expected Standard + (Re, Wr, Ma)

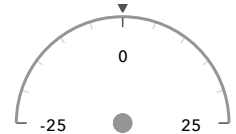
% Higher Standard (Re, Wr, Ma)

-

-



In line with the national average (0%) ◀



In line with the national average (0%) ◀

KS1 higher and lower performing pupil groups 2023

Minimum group size: 5

	Higher performing	Lower performing
Overall achievement pupil progress		
KS1 reading achievement pupil progress		
KS1 writing achievement pupil progress		
KS1 mathematics achievement pupil progress		

Census information

KS1's latest academic year uses the Spring 2023 DfE census – [learn more](#) · [See recent Aspire updates](#)

2023 Value Added has only been calculated for pupils who we received EYFSP data as part of the 2021 FFT Results Service

Abbey Hey Primary Academy

2023 KS1 VA

Attainment & progress

KS1 Attainment 2023

87 pupils

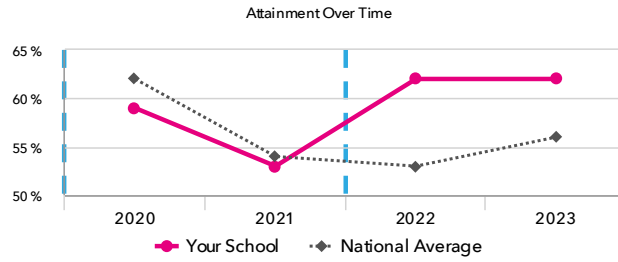
% Expected Standard + (Re, Wr, Ma)

62%

FFT Rank



In line with the national average (56%)



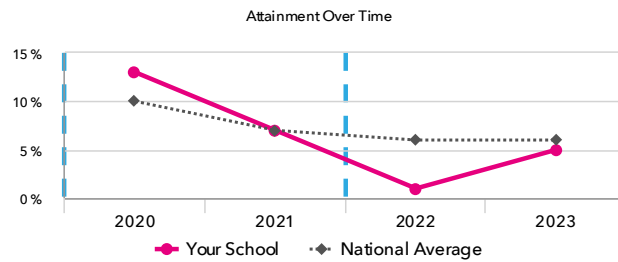
% Higher Standard (Re, Wr, Ma)

5%

FFT Rank

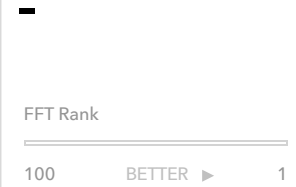


In line with the national average (6%)



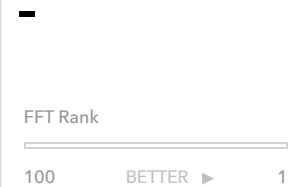
KS1 Progress 2023

% Expected Standard + (Re, Wr, Ma)



In line with the national average (0%)

% Higher Standard (Re, Wr, Ma)



In line with the national average (0%)

KS1 performance summary

	Actual results			Pupil progress		
	2021	2022	2023	2021	2022	2023
Number of Pupils / % Matched	89	84	87	89%	86%	-
% Expected Standard + (Re, Wr, Ma)	53%	62%	62%	+6%	+2%	-
% Higher Standard (Re, Wr, Ma)	7%	1%	5%	-2%	-7% -	-
% Expected Standard + Reading	72%	69%	76%	+11%	-4%	-
% Higher Standard Reading	16%	13%	18%	-3%	-6%	-
% Expected Standard + Writing	54%	65%	63%	+2%	+2%	-
% Higher Standard Writing	11%	1% -	5%	+0%	-10% -	-
% Expected Standard + Maths	72%	71%	80% +	+10%	-3%	-
% Higher Standard Maths	28% +	14%	14%	+14% +	-2%	-

Census information

KS1's latest academic year uses the Spring 2023 DfE census – [learn more](#) · [See recent Aspire updates](#)

2023 Value Added has only been calculated for pupils who we received EYFSP data as part of the 2021 FFT Results Service

Abbey Hey Primary Academy

2023

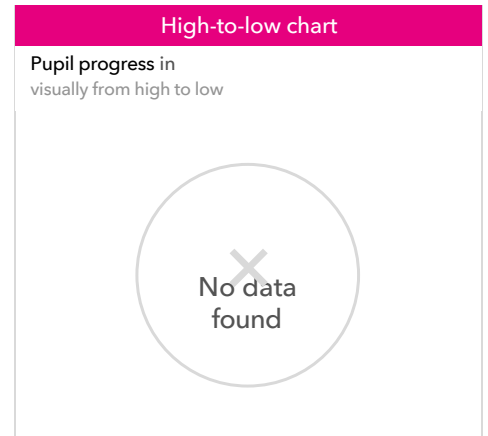
KS1

VA

Pupil groups

KS1 Pupil groups performance 2023

	Pupils	Actual results		Pupil progress		
		% Expected Standard + (Re, Wr, Ma)	% Higher Standard (Re, Wr, Ma)	% Expected Standard + (Re, Wr, Ma)	% Higher Standard (Re, Wr, Ma)	
Summary	All Pupils	87	62%	5%	-	-
Gender	Male	39	51%	0%	-	-
	Female	48	71%	8%	-	-
Pupil Premium	FSM (in last 6 years)	47	57% +	2%	-	-
	Not FSM (in last 6 years)	36	69%	8%	-	-
FSM	FSM	47	57% +	2%	-	-
	Not FSM	36	69%	8%	-	-
Term of Birth	Summer Term	20	50%	5%	-	-
	Spring Term	18	67%	0%	-	-
	Autumn Term	45	69%	4%	-	-
SEN Group	SEN Support	8	25%	0%	-	-
	EHC Plan	2	0%	0%	-	-
	No SEN	73	68%	5%	-	-
EAL	First language not English	42	57%	2%	-	-
	First language English	42	69%	7%	-	-
Ethnicity	White	46	63%	4%	-	-
	Black Caribbean	3	67%	0%	-	-
	Black African	10	90%	10%	-	-
	Pakistani	7	29%	14%	-	-
	Other Asian	1	0%	0%	-	-
	Any Other	14	64%	0%	-	-
	Unknown	2	50%	0%	-	-
	No Ethnicity Data	4	50%	0%	-	-



Census information

KS1's latest academic year uses the Spring 2023 DfE census – [learn more](#) · [See recent Aspire updates](#)

2023 Value Added has only been calculated for pupils who we received EYFSP data as part of the 2021 FFT Results Service

Abbey Hey Primary Academy

2023 KS1 VA

Subjects

KS1 subject performance 2023

	Actual results			Pupil progress			Actual results over time
	2021	2022	2023	2021	2022	2023	
Number of Pupils / % Matched	89	84	87	89%	86%	-	
Reading							
% Expected Standard +	72%	69%	76%	+11%	-4%	-	
% Higher Standard	16%	13%	18%	-3%	-6%	-	
Writing							
% Expected Standard +	54%	65%	63%	+2%	+2%	-	
% Higher Standard	11%	1% -	5%	+0%	-10% -	-	
Maths							
% Expected Standard +	72%	71%	80% +	+10%	-3%	-	
% Higher Standard	28% +	14%	14%	+14% +	-2%	-	
Science							
% Expected Standard +	-	76%	77%	-	-	-	

Census information

KS1's latest academic year uses the Spring 2023 DfE census – [learn more](#) · [See recent Aspire updates](#)

2023 Value Added has only been calculated for pupils who we received EYFSP data as part of the 2021 FFT Results Service

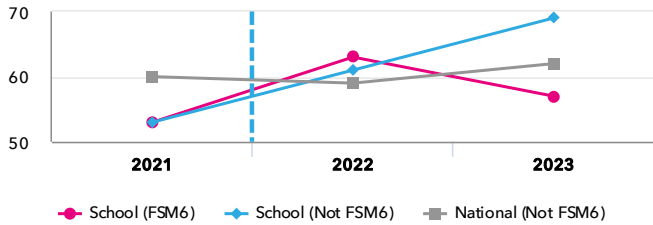
Abbey Hey Primary Academy

2023 KS1 VA

Disadvantaged pupils

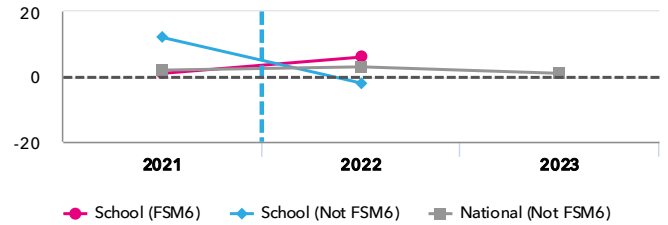
KS1 attainment for disadvantaged pupils 2023

% Expected Standard + (Re, Wr, Ma)

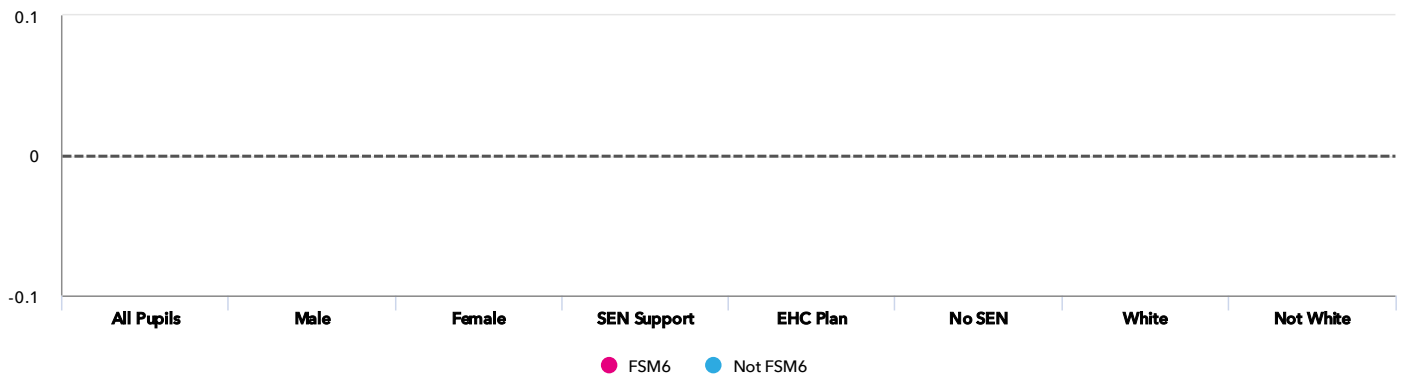


KS1 progress for disadvantaged pupils 2023

% Expected Standard + (Re, Wr, Ma)



Progress gap % Expected Standard + (Re, Wr, Ma)



Attainment & progress

	Pupils	Attainment					Progress		
		FSM6	Not FSM6	% Expected Standard + (Re, Wr, Ma)			% Expected Standard + (Re, Wr, Ma)		
				FSM6	Not FSM6	Gap	FSM6	Not FSM6	Gap
Summary	All Pupils	47	36	57% +	69%	-12%	-	-	-
Gender	Male	20	16	45%	63%	-18%	-	-	-
	Female	27	20	67%	75%	-8%	-	-	-
SEN Group	SEN Support	5	3	20%	33%	-13%	-	-	-
	EHC Plan	2	-	0%	-	-	-	-	-
	No SEN	40	33	65%	73%	-8%	-	-	-
Ethnic Group	White	22	24	55%	71%	-16%	-	-	-
	Not White	25	12	60%	67%	-7%	-	-	-

Census information

KS1's latest academic year uses the Spring 2023 DfE census – [learn more](#) · [See recent Aspire updates](#)

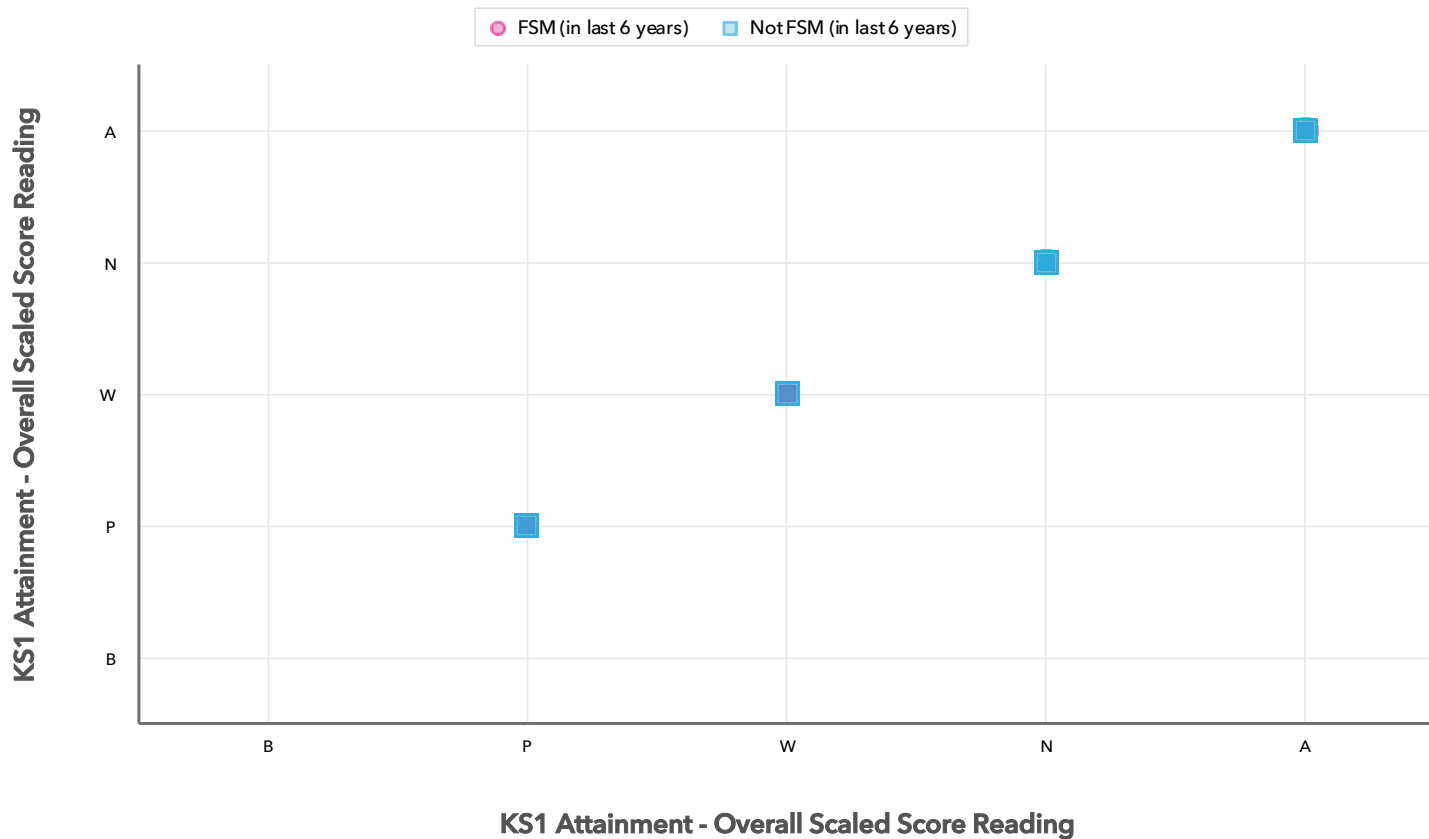
2023 Value Added has only been calculated for pupils who we received EYFSP data as part of the 2021 FFT Results Service

Abbey Hey Primary Academy

2023 KS1 VA

Scatterplot

KS1 Pupil scatterplot 2023 87 pupils highlighted by Pupil Premium



Census information

KS1's latest academic year uses the Spring 2023 DfE census – [learn more](#) · [See recent Aspire updates](#)

Context

Context · Year 2

		Pupils		Comparative profile 2022 / 2023		Absence during Key Stage 1		Persistent absence during Key Stage 1	
		School	School	National	School	National	School	National	
Summary	All Pupils	77	100%	100%	-	-	-	-	
Gender	Male	34	44%	51%	-	-	-	-	
	Female	43	56%	49%	-	-	-	-	
Pupil Premium	FSM (in last 6 years)	46	60%	25%	-	-	-	-	
	Not FSM (in last 6 years)	29	38%	75%	-	-	-	-	
FSM	FSM	46	60%	25%	-	-	-	-	
	Not FSM	29	38%	75%	-	-	-	-	
Term of Birth	Summer Term	20	26%	34%	-	-	-	-	
	Spring Term	15	19%	32%	-	-	-	-	
	Autumn Term	42	55%	34%	-	-	-	-	
SEN Group	SEN Support	8	10%	13%	-	-	-	-	
	EHC Plan	2	3%	4%	-	-	-	-	
	No SEN	65	84%	83%	-	-	-	-	
EAL	First language not English	35	45%	21%	-	-	-	-	
	First language English	41	53%	79%	-	-	-	-	
Ethnicity	White	42	55%	72%	-	-	-	-	
	Black Caribbean	3	4%	2%	-	-	-	-	
	Black African	9	12%	5%	-	-	-	-	
	Pakistani	5	6%	4%	-	-	-	-	
	Other Asian	1	1%	4%	-	-	-	-	
	Any Other	13	17%	5%	-	-	-	-	
	Unknown	2	3%	1%	-	-	-	-	
	No Ethnicity Data	2	3%	0%	-	-	-	-	

Census information

KS1's latest academic year uses the Spring 2023 DfE census – [learn more](#) · [See recent Aspire updates](#)